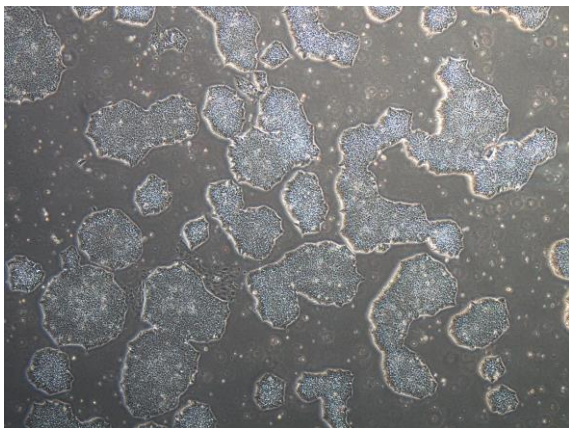
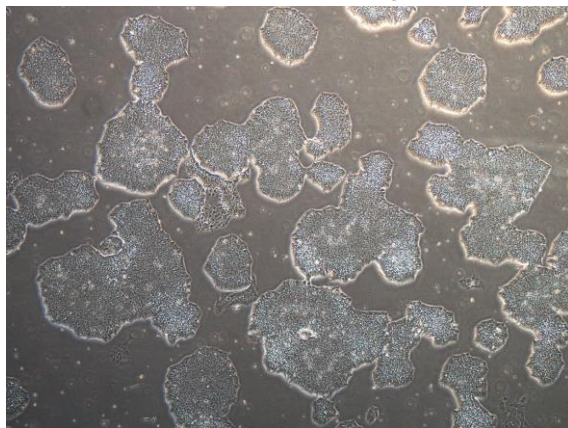


【 CiRA-j-1011 】 Morphology of iPSC colonies

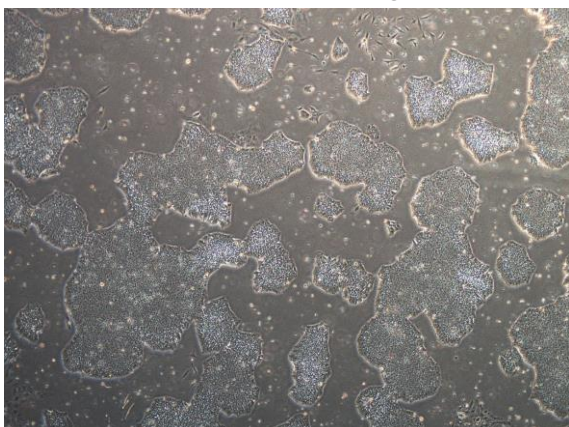
CiRA-j-1011-A: passage-2



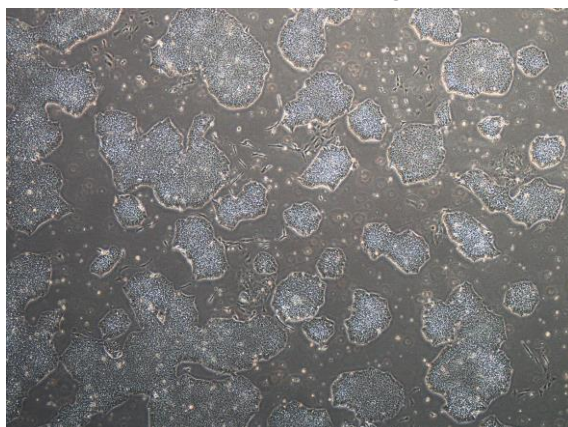
CiRA-j-1011-B: passage-2



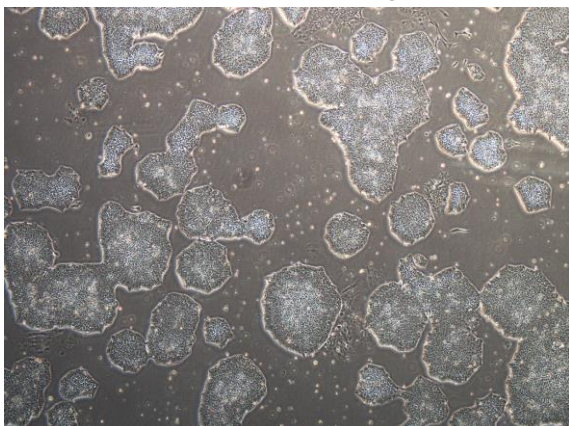
CiRA-j-1011-C: passage-2



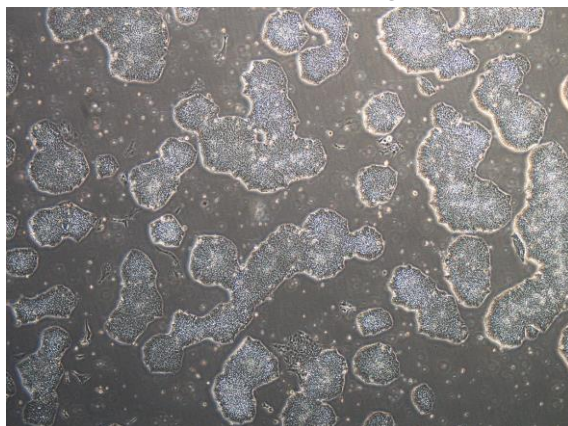
CiRA-j-1011-D: passage-2



CiRA-j-1011-E: passage-2



CiRA-j-1011-F: passage-2



(All images were captured at 4x magnification)